



ITRC Guidance Information for Academia

Product Announcement (July 2008)

Enhanced Attenuation of Chlorinated Organics (EACO): A Decision Framework for Site Transition

This guidance includes a Decision Flowchart that provides a systematic approach for reviewing, planning, and evaluating site-specific conditions, which may lead to enhancement technologies in the saturated subsurface contaminated with chlorinated organics. In addition, it describes remedial strategies for enhanced attenuation (EA) processes, by either increasing the attenuation capacity of the aquifer or decreasing the flux of contaminants. This guidance contains the following:

- Current Limitations of Monitored Natural Attenuation (MNA)
- Description of Mass Loading, Mass Flux, and Aquifer Attenuation Capacity
- Enhanced Attenuation Benefits
- Decision Flowchart
- Enhancement Technologies and Options
- Regulatory Considerations
- Challenges and Solutions



Background

Chlorinated organic contamination exists nationwide and worldwide. There is little guidance available regarding when to transition from active remedies, such as source control, to an MNA remedy and from an MNA remedy to active remediation. The use of EA does not require any alternative regulatory considerations.

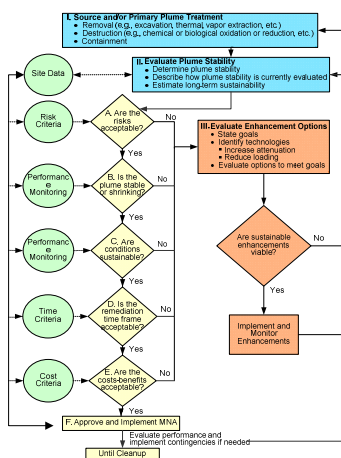
Benefits

- ▶ Facilitates transition of contaminated sites through the remediation process
- ▶ Provides scientific documentation for remedy change
- ▶ Complements MNA and expands remediation opportunities
- ▶ Integrates source zone treatment and MNA
- ▶ Encourages a systematic approach to total site remediation
- ▶ Helps streamline/expedite review process

Actions

ITRC requests that your institution, with the help of your ITRC State Point of Contact (POC) and Industrial Affiliate Program (IAP) representative

- ▶ Incorporate this guidance into your teaching curriculum in an appropriate location
- ▶ Request students visit the ITRC website and download applicable documents
- ▶ Endorse and provide opportunities for students to attend [FREE](#) Internet-based training on EACO
- ▶ Report to ITRC, through the contacts listed below, any use of EA and successes your institution has with this guidance (Go to www.itrcweb.org)
- ▶ Report to ITRC, via your State POC or IAP representative, any problems or concerns related to this guidance



Resources

Documents

- ▶ *Enhanced Attenuation: A Solution to a Common Groundwater Remediation Problem*, 2005 (fact sheet)
- ▶ *National Survey of State Regulators: A National Overview of Monitored Natural Attenuation and Enhanced Attenuation—Results of an Interstate Technology and Regulatory Council Survey*, 2005
- ▶ *A Decision Flowchart: The Decision Flowchart for the Use of Monitored Natural Attenuation and Enhanced Attenuation at Sites with Chlorinated Organic Plumes*, 2007
- ▶ *Enhanced Attenuation of Chlorinated Organics: Electronic Resource Guide*, 2007
- ▶ *Enhanced Attenuation: Chlorinated Organics, EACO-1*, 2008

Links

For more information and useful links about enhanced attenuation of chlorinated organics, go to http://www.itrcweb.org/teampublic_EACO.asp.

Training on Enhanced Attenuation of Chlorinated Organics

ITRC has developed a FREE Internet-based training course for *Enhanced Attenuation: Chlorinated Organics*. This training describes the transition (the bridge) between aggressive remedial actions and MNA and vice versa. EA is a protocol and strategy which includes the application of technologies that minimize energy input and are sustainable to reduce contaminant loading and/or increase the attenuation capacity of a contaminated plume to progress sites towards established remedial objectives. Contaminant loading and attenuation capacity are fundamental to sound decisions for remediation of groundwater contamination. This training explains how to use a decision framework which, when followed, allows for a smooth transition from more aggressive remedial technologies to sustainable remedial alternatives and eventually to MNA.

ITRC's Internet-based training courses assist potential users of the ITRC guidance document to understand when and how to use the document and the associated technology and/or approach. Participants can take the training "live" from the comfort of their own office or access archives of past classes at their convenience. Through ITRC's partnership with U.S. EPA's Technology Innovation Program, ITRC delivers training courses via the Internet to reach a geographically dispersed audience of regulators, consultants, and other members of the environmental community. The training sessions last approximately 2 hours, cover technical and regulatory information specific to environmental technologies and innovative approaches, and are supported by consensus-based ITRC guidance documents.

Cost: Sponsored by ITRC and EPA with no cost for the participant

Registration: <http://clu-in.org/studio/seminar.cfm> (opens 4–6 weeks prior to class date)

Associated guidance documents: Available from www.itrcweb.org

If you have questions after completing the on-line registration, call (402) 201-2419 or send an e-mail to training@itrcweb.org.

Contacts

EACO Team Co-Leaders
Judie Kean (FL), Judie.Kean@dep.state.fl.us, and
Kimberly Wilson (SC), wilsonka@dhec.sc.gov



ECOS

ITRC is affiliated with
the Environmental
Council of the States



Regulatory Acceptance for New Solutions

Documents, free Internet-based training, contact information

www.itrcweb.org